

4. Push vacuum line on fitting.

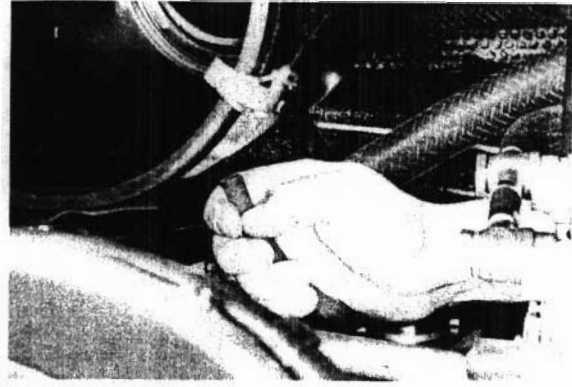
5. Reconnect linkage.

6. Adjust idle (see SF 58).

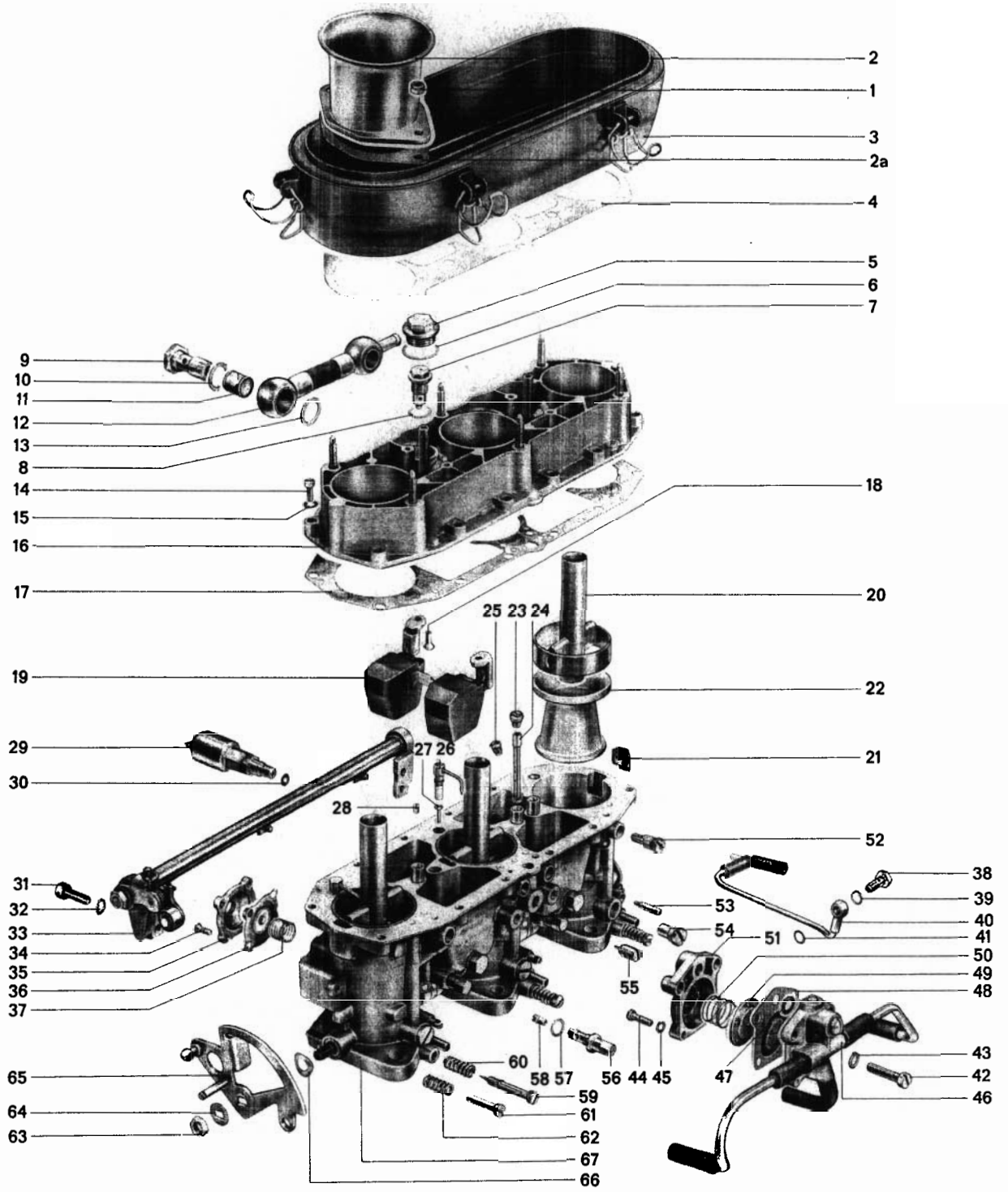
7. Install air cleaner and secure hoses.

Note

Push condensation water drain hose on fitting in bottom part of the air cleaner assembly.



DISASSEMBLING AND ASSEMBLING CARBURETOR



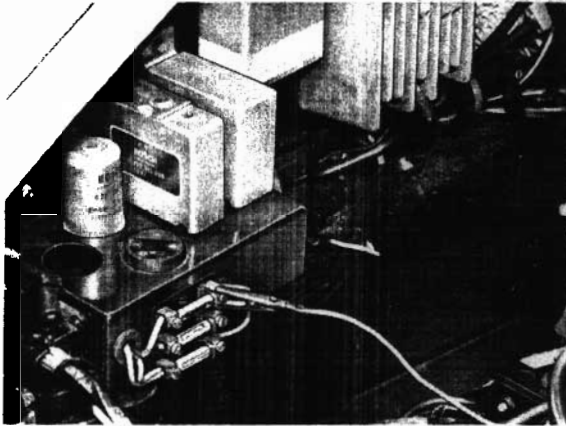
Nr.	Description	Qty.	Note when		Remarks
			Removing	Installing	
1	Self-locking nut	6			
2	Velocity stack	3			
2a	Gasket	3		Replace	
3	Clamp pan	1			
4	Gasket	1		Replace	
5	Threaded plug	2			
6	Ring gasket	2		Replace	
7	Float needle valve	2		Check & replace if necessary; max. torque 1.5 mkp (11.0 ft. lbs)	
8	Gasket	2		Replace	
9	Hollow bolt	2			
10	Gasket	2		Replace	
11	Filtering screen	2			
12	Connector	1			
13	Gasket	2		Replace	
14	Fillister head screw	12			
15	Lock washer	12			
16	Carburetor cover	1			
17	Gasket	1		Replace	
18	Round head screw	4			
19	Float, complete	2		Check & replace if necessary	
20	Pre-atomizer	3		Position properly; port must face mixing throat	
21	Retaining clip	3			
22	Venturi	3			
23	Air correction jet	3			

Nr.	Description	Qty.	Note when		Remarks
			Removing	Installing	
24	Emulsion tube	3			
25	Pump inlet valve	6			
26	Injection tube	3			
27	Plug	3			
28	Fuel jet for enrichment valve	1			
29	Enrichment solenoid	1			
30	Gasket	1		Replace	
31	Fillister head screw	4			
32	Lock washer	4			
33	Pump shaft				
34	Round head screw	12			
35	Pump cover	3			
36	Diaphragm	3			
37	Pump spring	3			
38	Hollow bolt	1			
39	Gasket	1		Replace	
40	Fuel line, complete	1			
41	Gasket	1		Replace	
42	Fillister head screw	4			
43	Lock washer	4			
44	Fillister head screw	2			
45	Lock washer	2			
46	Enrichment valve top	1			
47	O-ring	1		Check & replace if necessary	
48	Diaphragm	1		Check & replace if necessary	

Nr.	Description	Qty.	Note when		Remarks
			Removing	Installing	
49	Diaphragm plunger	1			
50	Spring	1			
51	Enrichment valve bottom	1			
52	Idle jet	3			
53	Air bypass control screw	3			
54	Threaded plug	3			
55	Auxiliary mixture control screw	1			
56	Jet housing	3			
57	Gasket	3		Replace	
58	Main jet	3			
59	Idle mixture control screw	3		Check taper point for damage, replace if necessary	
60	Spring	3			
61	Idle speed adjusting screw	1			
62	Spring	1			
63	Nut	1			
64	Lock plate	1			
65	Cam track	1			
66	Spring washer	1			
67	Carburetor housing	1			

Checking Micro switch

- a. Disconnect both wires from micro switch.
- b. Connect a jump wire from a source of power (such as positive battery cable or upper fuse in fuse box) to one of the micro switch terminals.



- c. Connect the second micro switch terminal to a test light and ground.
- d. Depress micro switch. The test light should light up when the switch is depressed, and go out when it is released.

Replace the micro switch if necessary.

- b. Start engine and depress throttle. The light should come on at about 1350 rpm.

- c. Release throttle. The light should go out at about 1300 rpm. Replace the micro switch if necessary.

Checking Solenoid for Enrichment Device

Disconnect right wire from micro switch. Connect a jump wire to a source of power (such as positive battery terminal or upper fuse in fuse box). When touching the jump wire to the terminal the solenoid should make a "clicking" sound. Replace solenoid for enrichment device if necessary.

Checking RPM Transducer

- a. Disconnect left wire from micro switch and connect it to ground through a test light.

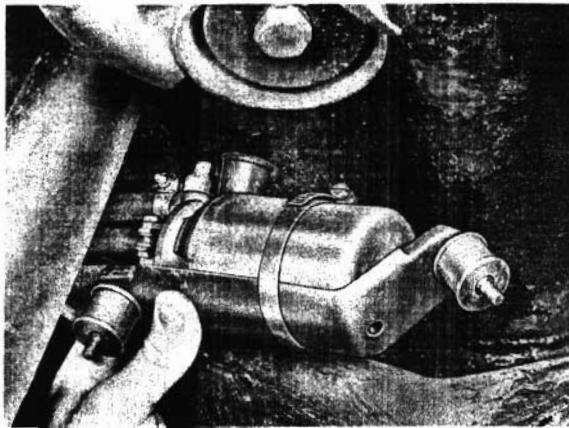
REMOVING AND INSTALLING FUEL PUMP

General

Beginning with the 1971 models, the electric fuel pump has been relocated. It is now in the left rear of the vehicle, between the transverse tube and rear axle trailing arm.

Removing

1. Remove cap nuts.
2. Withdraw pump with mounting bracket.



Installing

Note the following points during installation:

3. Loosen hose clamp and take pump out of the bracket.
4. Loosen fuel hose retaining clamps and pull hoses off the pump.
Caution
Block off the fuel hoses with hose clamps to keep fuel from spilling. Inlet is marked "S" and return is marked "R".
1. Coat both electrical terminals with multi-purpose Lithium grease to prevent corrosion.
2. Make sure that rubber boot is properly seated.